

# PNM Update NMEIC Conference

---

**LAURIE WILLIAMS – NOVEMBER 2025**

---

*Collaboration to Advance Energy R&D,  
Workforce Development, and Education*



1

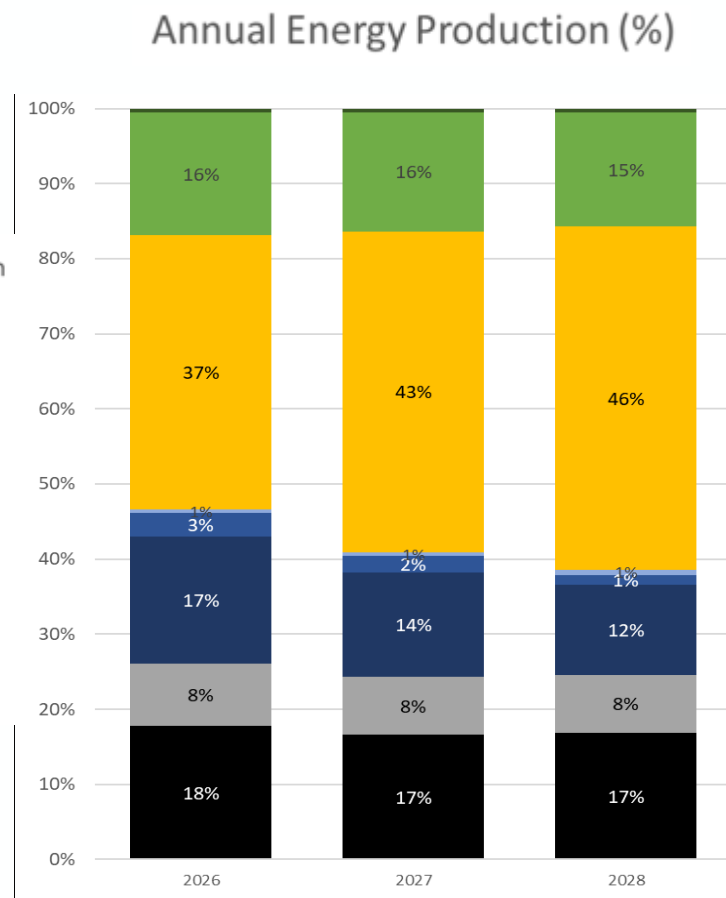
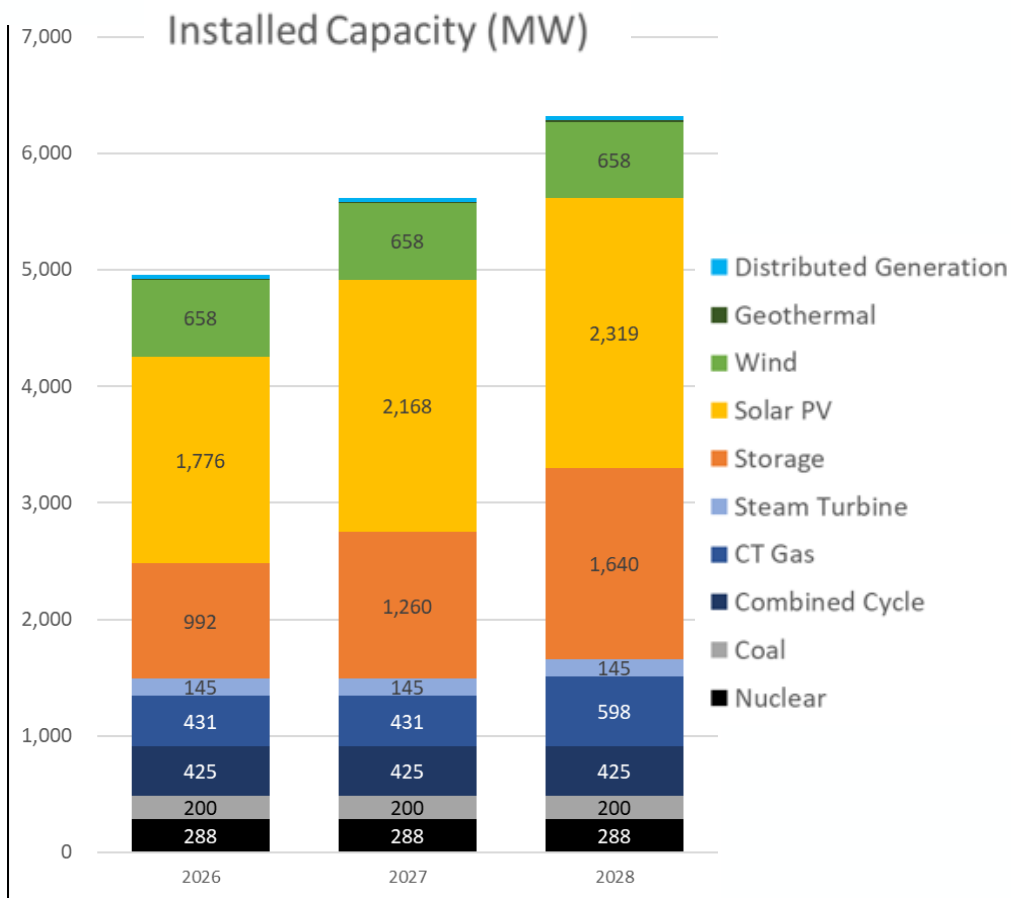
---

# AGENDA

---

- Overview of PNMs Efforts to Advance Energy R&D, Workforce Development, and Education
- Utility Overview and Current Innovations
  - 2026 and 2028 Journey to Carbon Free Resource Portfolio
  - 2029-2032 Resources
  - 20-year Transmission Outlook and Transmission Line Development
  - Regional Markets – EIM and EDAM
  - Grid Modernization and Distribution Sited Batteries
  - Economic Development and SB 170/HB 93 Legislation
- Collaboration and Innovation examples
  - Blackstone Acquisition Benefits for R&D and Workforce Development
  - Industry Collaborations on R&D and Emergent Technologies
  - Workforce Development Efforts

## PNM'S JOURNEY TO CARBON FREE



***PNM's energy production will be comprised of 71% zero carbon in 2026, and about 78% in 2028.***

---

# MAJOR INNOVATIONS AT PNM

---

Renewable and  
Storage  
Technology

Grid Enhancing  
Technologies

Grid  
Modernization

Integrated  
Planning

Distribution  
Sited Batteries

Wildfire  
Mitigation

Regional Market  
Participation

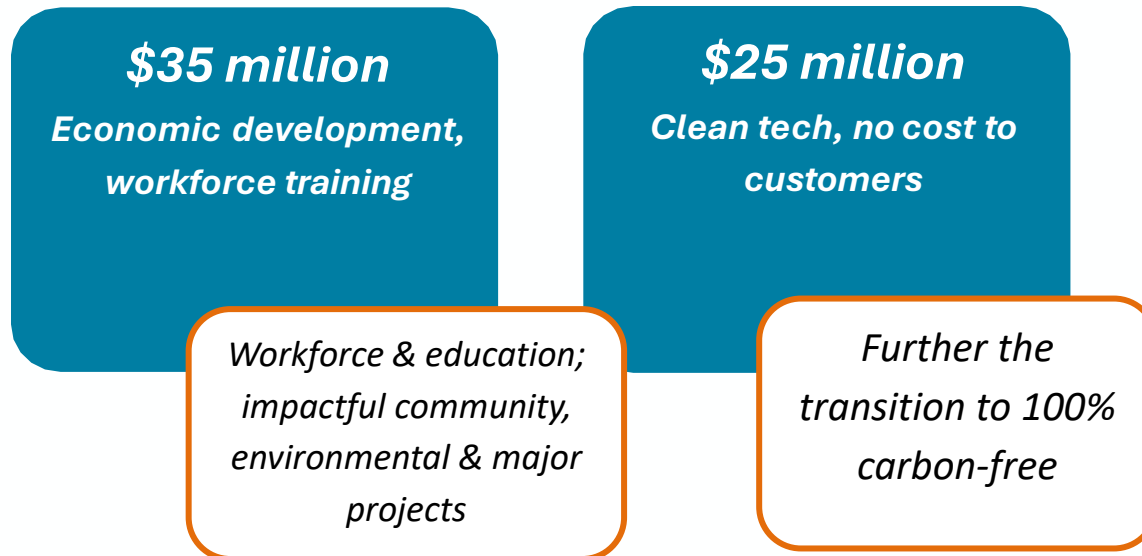
Hybrid Economic  
Development  
Solutions

20-Yr  
Transmission  
Outlook

# POWERING NEW MEXICO, TOGETHER

## KEY BENEFITS TO SUPPORT INNOVATION, R&D, AND WORKFORCE DEVELOPMENT

Of the \$175 million in benefits to PNM customers, Blackstone acquisition brings \$35M in commitments for economic development and workforce training, along with \$25M investment in clean technology to advance key development in the Energy Transition.



---

## EXAMPLE INDUSTRY COLLABORATIONS

---



Electric Power Research  
Institute (EPRI)



Sandia  
National  
Laboratories

Sandia National Labs  
(SNL)

Cooperative Research and  
Development Agreement (CRADA)



National Renewable  
Energy Lab (NREL)



U.S. DEPARTMENT  
*of* ENERGY

Department of Energy  
(DOE)



Energy Minerals and  
Natural Resources  
(EMNRD)

# WORKFORCE DEVELOPMENT – EXTERNAL FACING

